



# Helping entrepreneurs change the world

The SJF Institute connects, inspires, and accelerates sustainable entrepreneurs and the fields that support them. We empower companies that provide green solutions and build workplaces where employees can grow and thrive. We work with foundations, corporations and investors who believe in the power of entrepreneurship to change the world for the better.

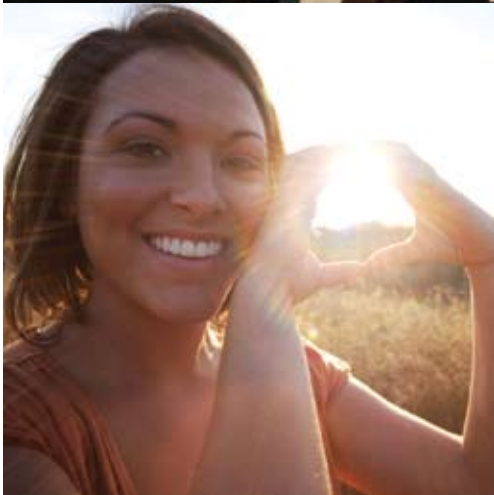


## connect

We bring together diverse constituencies to help bridge traditional gaps between entrepreneurs, investors, economic developers, policymakers, and community leaders; we do this daily and through networking events and summits. We participate in industry-building initiatives and lend our expertise in speaking and judging at national and local entrepreneurial events.

**"SJF's CleanLinks events provide the perfect venue for us to connect with cleantech industry leaders and financing partners that can help accelerate our new product launches and support our continued sales growth."**

*– Greg Frisby, CEO of Sensory Analytics*



## inspire

We define and disseminate best practices and conduct applied research to scale the fields of sustainable business, employee engagement, and impact investing. This work includes the Green Jobs Award, research reports such as *Employees Matter: Maximizing Company Value Through Employee Engagement*, CEO panels, and webinars highlighting innovative entrepreneurs and practitioners.

**"Inspiring examples of innovation and turning green into profits and ethics."**

*– 2009 SJF Summit on the New Green Economy Attendee*



## accelerate

We enable sustainable entrepreneurs to go further, faster through direct assistance, Getting Ready for Equity™ workshops, and mentorship programs, leveraging the expertise of our affiliated impact investment fund, SJF Ventures. We provide unique support around employee engagement and broad based ownership.

**"Assistance from SJF Institute helped position us to be a stronger company when seeking investment."** *– Michael Shore, CEO, FLS Energy*



connect. inspire. accelerate.



## Contributors

Appalachian Regional Commission  
Bank of America  
Citi Foundation  
F.B. Heron Foundation  
Mary Reynolds Babcock Foundation  
Rockefeller Foundation

## Staff

**Bonny Moellenbrock**, *Executive Director*  
**Anne Claire Broughton**, *Senior Director*  
**Erin Payne**, *Program Associate*  
**Elizabeth Taylor**, *Finance Manager*  
**Rick Defieux**, *Venture Advisor*  
**David Griest**, *Venture Advisor*  
**Arrun Kapoor**, *Venture Advisor*  
**Alan Kelley**, *Venture Advisor*  
**David Kirkpatrick**, *Venture Advisor*  
**Cody Nystrom**, *Venture Advisor*

For more information, visit:  
[www.sjfinstitute.org](http://www.sjfinstitute.org)

## Board of Directors

**Michael Caslin**  
*Principal, Sustainable Community Resource Capital*

**Cathy Clark**  
*Adj. Asst. Professor, Fuqua School of Business,  
Duke University*

**Deborah Gallagher**  
*Assistant Professor, Nicholas School of the Environment,  
Duke University*

**Maria Kingery**  
*Co-Founder, Southern Energy Management*

**Franklin Madison**  
*Technology Program Director, ITAC*

**Greg Ratliff**  
*Senior Program Officer, Bill & Melinda Gates Foundation*

**Morgan Simon**  
*Founding Executive Director and Strategic Advisor,  
Responsible Endowments Coalition*

**Kevin Trapani**  
*President/CEO, The Redwoods Group*

**Michael Whelchel**  
*Partner, Watershed Capital*

Durham, NC | New York | San Francisco